

Original

ARTÍCULO EN INGLÉS

Wavelet transform analysis of heart rate variability for determining ventilatory thresholds in cyclists

J. M. García-Manso^a, S. Sarmiento-Montesdeoca^a, J. M. Martín-González^a, F. J. Calderón-Montero^b
 and M. E. Da Silva-Grigoletto^c

^aDepartment of Physical Education. University of Las Palmas de Gran Canaria. Las Palmas de Gran Canaria. Spain.

^bFaculty of Physical Activity and Sport Science (INEF). Technical University of Madrid. Madrid. Spain.

^cAndalusian Center of Sports Medicine. Córdoba. Spain.

History of the article:
 Received June 13, 2008
 Accepted October 7, 2008

Key words:
 Heart rate variability.
 Exercise.
 Time frequency analysis.
 Non linear analysis.

Palabras clave:
 Variabilidad de frecuencia cardiaca.
 Ejercicio.
 Análisis de ritmos de tiempo.
 Análisis no lineal.

Correspondence:
 J. M. García-Manso.
 Departamento de Educación Física.
 Facultad de Ciencias de la Actividad Física y el Deporte.
 Universidad de Las Palmas de Gran Canaria.
 35017 Ilhas Canarias. España.
 E-mail:
 jgarcia@def.ulpgc.es

ABSTRACT

Purpose. This study aims to compare the relationship between the ventilatory thresholds and the aerobic and anaerobic thresholds obtained by continuous wavelet transform (CWT) of heart rate variability (HRV).

Methods. Eight healthy, trained, male cyclists (age: 17.12 ± 1.11 years; height: 1.73 ± 0.06 m; weight: 69.96 ± 8.03 kg) underwent an ergospirometric test on a cycloergometer, performing an incremental protocol until exhaustion. The cardiac signal was recorded using cardiostachometers. The aerobic-anaerobic transition phase was identified by wavelet analysis using the kinetics of the maximum spectral energy peaks (f_p) of the HRV high-frequency (HF) and very high-frequency (VHF) bands, and those of the product of the HF-VHF instantaneous spectral power (ms^2) and f_p (PSf_p). The aerobic and anaerobic thresholds obtained were compared to those provided by the standard analysis of gas exchange variables.

Results. No significant differences were observed between the aerobic and anaerobic thresholds identified by wavelet analysis involving either f_p or PSf_p , and those identified by the respiratory exchange variables. Bland-Altman plots showed that both methodologies identified identical transition zones. When the comparison variable used in the wavelet analysis was f_p , a close agreement was seen with the gaseous exchange variable analysis in terms of the aerobic threshold; the relationship was less strong for the anaerobic threshold. When the comparison variable was PSf_p , the relationship between the methodologies was again within the acceptable range, although this time agreement was stronger for the anaerobic threshold.

Conclusion. Wavelet analysis of the HRV is a valid method for identifying the aerobic-anaerobic transition phase.

© 2008 Revista Andaluza de Medicina del Deporte.

RESUMEN

Análisis de la transformación de wavelet para determinar umbrales ventilatorios en ciclistas

Objetivo. El objetivo de este estudio es el de comparar la relación entre umbrales ventilatorios y umbrales aeróbicos y anaeróbicos obtenida empleando la transformada de wavelet continua (TWC) de la variabilidad de ritmo cardiaco (VRC).

Métodos. Ocho ciclistas varones, sanos y expertos (edades: $17,12 \pm 1,11$ años; altura: $1,73 \pm 0,06$ m; peso: $69,96 \pm 8,03$ kg) hicieron una prueba de ergoespirometría en un cicloergómetro, haciendo un protocolo progresivo hasta llegar a un cansancio total. El signo cardiaco fue registrado con cardiostacómetros. La fase de transición aeróbica-anaeróbica fue identificada por análisis de wavelet, utilizando las cinéticas de pico del espectro de máxima energía (f_p) de las bandas de alta frecuencia (AF) de VRC y de muy alta frecuencia (MAF), y los picos del producto de la potencia espectro instantánea AF-MAF (ms^2) y f_p (PSf_p). Los umbrales aeróbicos y anaeróbicos obtenidos fueron comparados con los obtenidos por el análisis estándar de las variables de intercambio gaseoso.

Resultados. No hubo diferencias significativas entre los umbrales aeróbicos y anaeróbicos identificados por análisis wavelet que implicaban f_p o PSf_p , y los identificados por las variables de intercambio respiratorio. Los diagramas de cajas de Bland-Altman demuestran que ambas metodologías identificaron zonas de transición idénticas. Cuando la variable de comparación utilizada en el análisis de wavelet fue f_p , observaron un acuerdo importante en el análisis de la variable de intercambios gaseosos en términos del umbral aeróbico; la relación fue menos fuerte para el umbral anaeróbico. Cuando la variable de comparación fue PSf_p , la relación entre las metodologías fue, de nuevo, dentro del rango aceptable, aunque esta vez el acuerdo fue más fuerte para el umbral anaeróbico.

Conclusión. El análisis de wavelet del VRC es un método válido para identificar la fase de transición aeróbico-anaeróbico.

© 2008 Revista Andaluza de Medicina del Deporte.

Introduction

It is known that, during exercise, the anaerobic threshold (AT) is the level of exertion where your body must switch from aerobic metabolism to anaerobic metabolism. The AT is also defined as the VO_2 above which the lactate/pyruvate ratio increases¹. In the field of sports and physical activity, this threshold is used to analyze physical fitness and to provide a criterion for setting training workloads. One of the most frequently used methods for determining AT is the analysis of gas exchange variables, which establishes both the ventilatory aerobic and anaerobic thresholds (VT_1 , ventilatory threshold 1, and VT_2 , ventilatory threshold 2, respectively)². However, this requires sophisticated and expensive equipment which is not always available to sports technicians.

An alternative methodology involves measuring heart rate (HR), whether it is by measuring the absolute response of the HR in beats/ min^{3-5} , or by analyzing HR variability (HRV)⁶⁻¹⁹.

A number of different mathematical approaches have been employed for HRV analysis and its application in determining thresholds. One of the most frequently utilized is fast Fourier transform (FFT), which sorts HR into a series of bandwidths: low-frequency (LF) (< 0.15 Hz), high-frequency (HF) (0.15-0.4 Hz) and very high-frequency (VHF) (> 0.4 Hz). The LF band is under sympathetic and vagal cardiovascular control, while the HF and VHF bands are related to sinorespiratory arrhythmia, and are, therefore, under vagal control. However, FFT might not be the most appropriate method since it is relatively simple only for the analysis of stationary signals.

One of the shortcomings of the Fourier transform is that it does not offer any information about the time at which a given frequency component occurs. This is not a problem for stationary signals, signals whose frequency content does not change with time, but does leave room for improvement when non-stationary signals are involved. In order to solve this problem, short time Fourier transform (STFT) has been suggested. In this method, the non-stationary signal is divided into small portions, which are assumed to be individually stationary. For this purpose, a window function of a given width is selected, this window function is shifted during the signal, and in each case, the Fourier transform is then applied to each of these portions. Thus, it becomes necessary that an agreement with regards to window size be made. It is known that STFT may fail if the signal contains both slowly changing components and rapidly changing transient events. Moreover, in the case of non-stationary signals, it is necessary to select sufficiently short windows. This improves temporal resolution but produces deterioration in frequency resolution.

In order to overcome the problem of non-stationarity, a number of solutions, known as time-frequency analysis, have been proposed. One of the most known of these is the "Wigner-Ville Distribution"²⁰, which is functionally similar to a spectrogram but offers better temporal and frequency resolution.

Another method is that known as time-scale or "wavelet" transform analysis (WTA). This methodology is relatively recent and is gradually becoming widely used in the study of non-stationary biological signals such as HRV. WTA utilizes short windows at high frequencies and long windows at low frequencies and can be successfully applied to non-stationary signals for analysis and processing. The underlying concept of WTA is to analyze according to scale; for such purpose base functions known as "mother wavelets" of finite energy and duration are used. They retain their form at different scales (via dilatation or compression of the base signal). In such way, the wavelet transform coefficients are obtained when shifting the base function by an extremely small amount in time

for each scale factor. The scalogram (wavelet transform plot) of the continuous wavelet transform (CWT) obtained in this way is a function of two variables, $|X(a,b)|^2$, where b is the translation factor and a the scale factor, and is represented on a two-dimensional plane. The scalogram contains information about the temporal localization of "events", but is dependent on the base function selected for the analysis. For the best-known wavelet functions, it is quite straightforward to relate the scale at which a signal is evaluated to the frequency. Another advantage of WTA is the existence of a distinct version known as discrete wavelet transformation (DWT), which enables a signal to be decomposed into a set of mutually orthogonal signals in such way that each one of these covers a particular region of the total frequency spectrum. Among other things, this model allows us to eliminate parts of a signal (detrending, denoising, etc.) very easily, while leaving us in good control of the frequency component that has been eliminated. Generally speaking, WTA also produces good results in terms of the clarity and discrimination of patterns.

Another problem with this type of methods is what is known as the "uncertainty principle" which, in short, states that the more accurate the temporal localization of a given pattern is, the less well defined its frequency will be, and *vice versa*; i.e. improved accuracy of frequency definition has a negative effect on time measurement. In the case of CWT, this situation can be dealt with by a suitable choice of base function, both in order to reach a good compromise between time and frequency and to fix the value of one of these two parameters. A single base function, such as the Morlet wavelet function, thus depends on a parameter that we can operate on, and that defines its angular frequency. In any case, the choice must always be made prior to the analysis.

Thus, the main objective of this paper was to demonstrate that WTA is also capable of providing good results when we need to obtain information regarding the measurement of thresholds, using HRV as the study parameter and for which good, and easily utilizable software packages are available. To this end, on the basis of an HRV signal obtained via an incremental test, and using WTA, we attempt to identify the first and second thresholds and compare them with those obtained from ventilatory parameters obtained through the use of traditional methods.

Methods

Subjects

The study subjects were 8 healthy, male, high-performance cyclists (descriptive anthropometric and physiological characteristics for the sample are shown in table 1), all of whom were familiar with cycloergometer tests. The subjects were informed of the nature of the study, which

Table 1
Physiological characteristics of the subjects (n = 8)

Age (years)	17.12 ± 1.11
Height (m)	1.73 ± 0.06
Weight (kg)	69.96 ± 8.03
Body fat percent (%)	9.05 ± 1.56
HR _{rep} (beats/ min^{-1})	54.38 ± 8.81
HR _{max} (beats/ min^{-1})	196 ± 4.99
W _{max} (watts)	427.5 ± 37.98
W _{rel} (watts/ kg^{-1})	6.14 ± 0.55
VO _{2rel} (ml/ $\text{min}^{-1}/\text{kg}^{-1}$)	78.95 ± 7.63

HR_{max}: heart rate maximum; HR_{rep}: heart rate at rest; VO_{2rel}: oxygen uptake maximum relative at weight; W_{max}: work load maximum; W_{rel}: work load maximum relative at weight.

adhered to the ethical guidelines of the Declaration of Helsinki, and all gave their written informed consent to be included. The study protocol was approved by the Ethics Committee of the University of Las Palmas de Gran Canaria. Height and weight were measured before each test. Six skinfold measurements were taken (triceps, subscapular, suprailiac, abdominal, thigh and calf) and the Yuhasz formula was used to determine percentage body fat²¹.

Experimental design

In this cross-sectional study the exercise tests were performed using a cycloergometer with an electromagnetic braking system (Jaeger ER800, Erich Jaeger, Germany). Before starting the incremental load test the subjects spent 2 min at rest on the cycloergometer to determine baseline values. After a warm-up period of 10 min (5 min at 50 W and 5 min at 100 W), all subjects pedaled at between 80-90 rpm with load increases of 5 W every 12 s (25 W/min⁻¹) until exhaustion. All tests were performed at a room temperature of 21 °-24 °C and a relative humidity of 44-55%.

Data acquisition

The subjects breathed normal air through a low resistance valve using a mask of known dead volume. The composition and volume of the expired air was determined using a Jaeger Oxicon Pro analyzer (Erich Jaeger, Germany); this adheres to the standards of the American Thoracic Society and the European Communities Chemistry Society. Gaseous exchange data were processed breath by breath using LabManager v. 4.53 software (Erich Jaeger, Germany). Prior to each test, the equipment was calibrated using a gas of composition 16% O₂, 5% CO₂ and 79% N₂. HR was monitored beat by beat using a Polar S810i RR cardiometer (Polar Electro, Oy, Finland) and a Jaeger ECG surface electrocardiograph (Viasys Healthcare, Erich Jaeger, Germany). The cardiometric recording of the HR is a validated method²². The cardiac data were processed using Polar Precision Performance SW software v. 3.00 (Polar Electro, Oy, Finland).

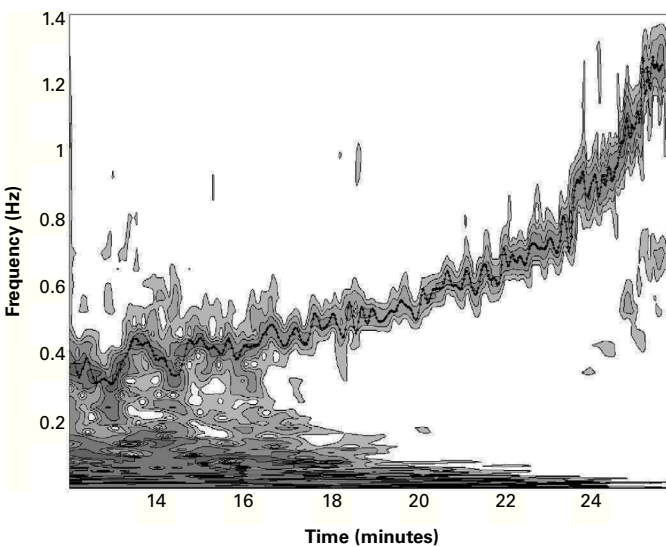


Fig. 1. Contours of the wavelet coefficients of the heart rate variability, showing the changes in the frequency components with time, obtained using a Morlet base function where $\omega = 20$. The x-axis represents time in minutes, with frequency in Hz on the y-axis. Coefficients below a certain value have been eliminated in order to improve the readability of the spectrogram. The line of points show respiratory frequency values in Hz.

Data analysis

The cardiac signal was examined by analyzing the intervals between each beat; this provided the HRV. It is well known that, during incremental load tests, the HRV decreases with increasing workload. A DWT, with a Daubechies (Db8) type base function²³, was initially used to eliminate the trend of the signal over time. A linear interpolation was then applied to the remaining signal in order to obtain a uniformly sampling. Finally, the digital RR signal was subjected to CWT using a Morlet type base function²⁴ with $\omega = 20$, which provided good quality frequency resolution. Figure 1 shows the spectrogram using a contour line diagram, in which we can see the changes in the frequency of HRV as the exercise progresses.

In order to validate both the chosen interpolation and the resulting spectrogram, we have superimposed, in figure 1, the breathing frequency (B_i) in Hz, which was obtained from the gas analyzer. It can be observed how B_i and the peaks of the HF-VHF band of the HRV signal become synchronized during the course of the exercises. The analysis was performed using Matlab software (Mathworks Inc., Natick, MA, USA).

Identification of the aerobic-anaerobic transition phase via the analysis of gas exchange variables

Gas exchange data were analyzed using the visual identification method of Wasserman²⁵. This method relates V_E/VCO_2 (ventilatory equivalent CO₂), V_E/VO_2 (ventilatory equivalent O₂), $PETCO_2$ (end-tidal partial pressure CO₂), and $PETO_2$ (end-tidal partial pressure O₂) to the load in order to detect the aerobic-anaerobic transition phase^{26,27}. The combination of several methods, however, is more reliable for the determination of VT_1 and VT_2 ; thus, the procedure described by Gaskill et al was followed². Three independent, blinded observers determined these thresholds (fig. 2, upper right and lower left and right).

Identification of the aerobic-anaerobic transition by wavelet analysis of the heart rate variability

This procedure required the calculation of:

1) The evolution of frequency peaks of the HRV HF-VHF band (f_p). The values of f_p were obtained from the spectrogram, taking the value of the frequency that corresponds to the local maximum value of the wavelet coefficients (equivalent to the maximum spectral density) in the HF-VHF band at any time during the test. The aerobic and anaerobic thresholds were determined on the basis of the changes in the values of f_p in the test. The aerobic threshold, ($f_p T_1$), was taken as the first inflexion of the kinetics of the f_p slope, and the anaerobic threshold, ($f_p T_2$), as the second inflexion (fig. 2 upper left).

2) The evolution of the product of the HF-VHF spectral energy value by f_p ($PS \cdot f_p$). $PS \cdot f_p$ was found useful by Cottin et al^{17,19} for identifying these thresholds. This variable decreased with load until reaching a minimum value (fig. 2 upper left), i.e., the first inflexion point representing the aerobic threshold ($PS \cdot f_p T_1$); it then remained stable until it started to show a moderate increase, i.e., the second inflexion point representing the anaerobic threshold ($PS \cdot f_p T_2$).

Statistical analysis

The paired Student's t-test was used to compare the values for the aerobic and anaerobic thresholds determined by the analysis of gas exchange

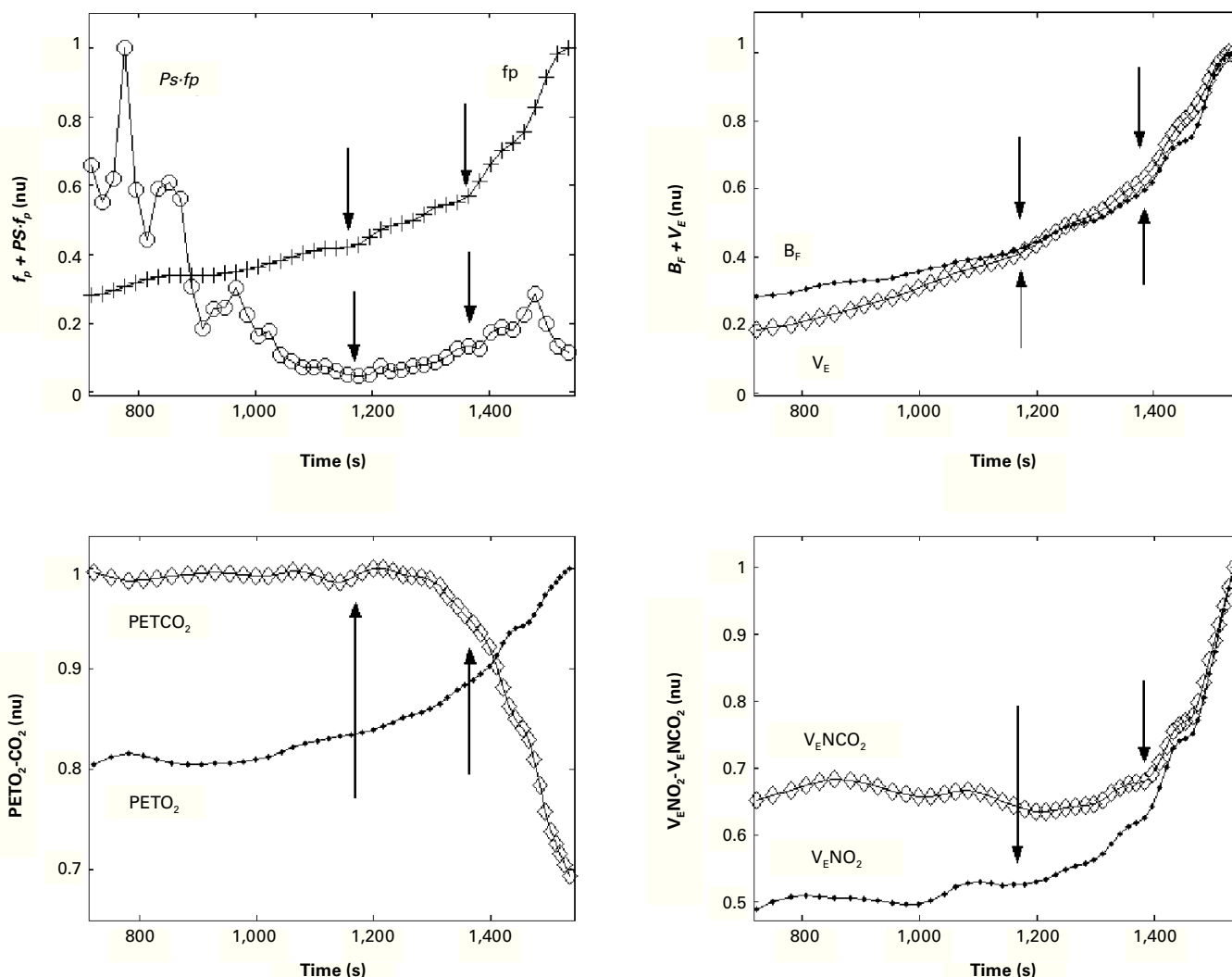


Fig. 2. Upper left: graph showing the behavior of f_p and $PS \cdot f_p$ against time during the incremental load test. Upper right: graph showing the kinetics of B_f and V_E (see abbreviations) against time. Lower left: graph showing the kinetics of $PETO_2$ and $PETCO_2$. Lower right: graph showing the kinetics of V_E/VO_2 and V_E/VCO_2 (see abbreviations) against time. The values of all variables were normalized; the last three graphs show VT_1 and VT_2 .

variables and the wavelet transformation of HVR. Pearson product moment correlation was used to evaluate the association between gas analyzer procedures and HRV methods. The significance level was set at $p < 0.05$. The degree of agreement between the two methods was determined using Bland-Altman plots²⁸.

Results

Table 1 shows the anthropometric and baseline characteristics (mean \pm standard deviation [SD]) of the study subjects and the values of their physiological variables. It is clear that the subjects, in spite of their youth, displayed a morpho-functional profile close to that of an experienced cyclist of the senior category.

Figure 1 shows the wavelet coefficients of the HRV of one of the subjects, in which we can observe a typical behavior of an incremental test. The figure shows the changes in the frequency components with time. The x-axis represents time in minutes, while the y-axis represents frequency in Hz. Coefficients below a certain value have been eliminated in order to improve the readability of the spectrogram. The dotted line

superimposed on the frequency of the HF-VHF band represents values of B_f (in Hz) obtained from the gas analyzer. It should be noted that the two signals are synchronized, which may be taken as an indicator of the adequacy of the wavelet transform method.

Table 2 compares the values of the aerobic and anaerobic thresholds obtained using the different gaseous exchange variables (B_f , ventilatory flow [V_E], $PETO_2$ and $PETCO_2$, V_E/VO_2 and V_E/VCO_2) and those obtained

Table 2
t-test comparisons of the thresholds determined by WTC analysis of HRV (from f_p) and the ventilatory method (in seconds)

VT_1	Mean \pm SD	t-test	p	VT_2	Mean \pm SD	t-test	p
B_f	1,077 \pm 59	0.76	0.47	B_f	1,250 \pm 63	-1.06	0.33
$f_p T_1$	1,073 \pm 58			$f_p T_2$	1,260 \pm 59		
V_E	1,071 \pm 60	-0.46	0.66	V_E	1,251 \pm 61	-1.39	0.21
$f_p T_1$	1,073 \pm 58			$f_p T_2$	1,260 \pm 59		
$PETO_2-CO_2$	1,070 \pm 58	-0.89	0.4	$PETO_2-CO_2$	1,249 \pm 61	-1.15	0.29
$f_p T_1$	1,073 \pm 58			$f_p T_2$	1,260 \pm 59		
V_E/VO_2-CO_2	1,077 \pm 57	0.53	0.59	V_E/VO_2-CO_2	1,251 \pm 57	-1.17	0.28
$f_p T_1$	1,073 \pm 58			$f_p T_2$	1,260 \pm 59		

HRT: heart rate variability; SD: standard deviation; WTC: wavelet transform analysis.

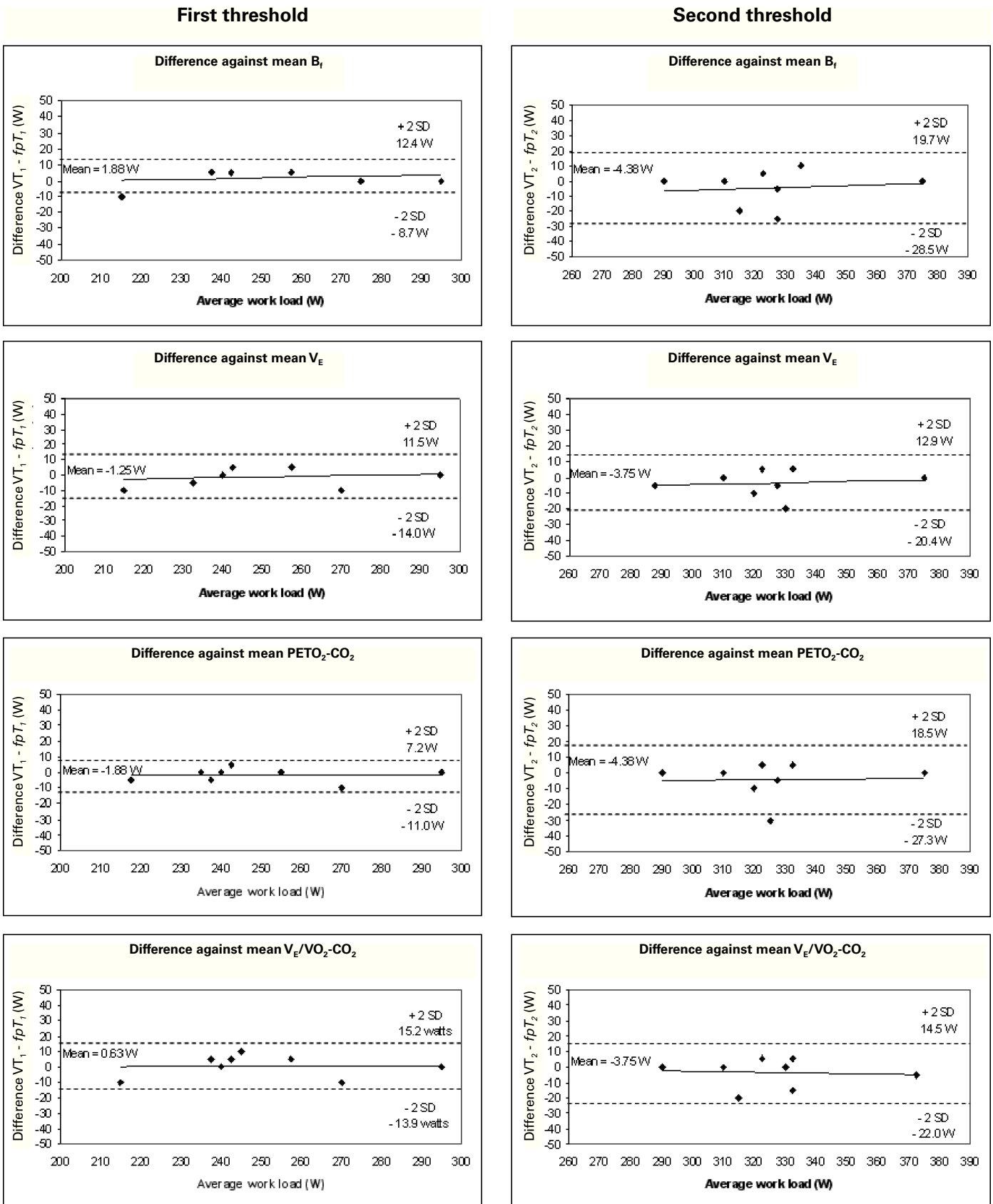


Fig. 3. Bland-Altman plots: differences between the mean threshold results determined using f_p and the ventilatory method plotted against the average threshold work load (W). Left: aerobic threshold determined using f_p compared with that detected using B_i , V_E , $PETO_2-CO_2$ and V_E/VO_2-CO_2 (from above to below). Right: anaerobic threshold determined using f_p compared with that determined using B_i , V_E , $PETO_2-CO_2$ and V_E/VO_2-CO_2 (form above to below). Each graph shows the means of the differences and the upper and lower limits of agreement (mean difference \pm twice the standard deviation [SD]).

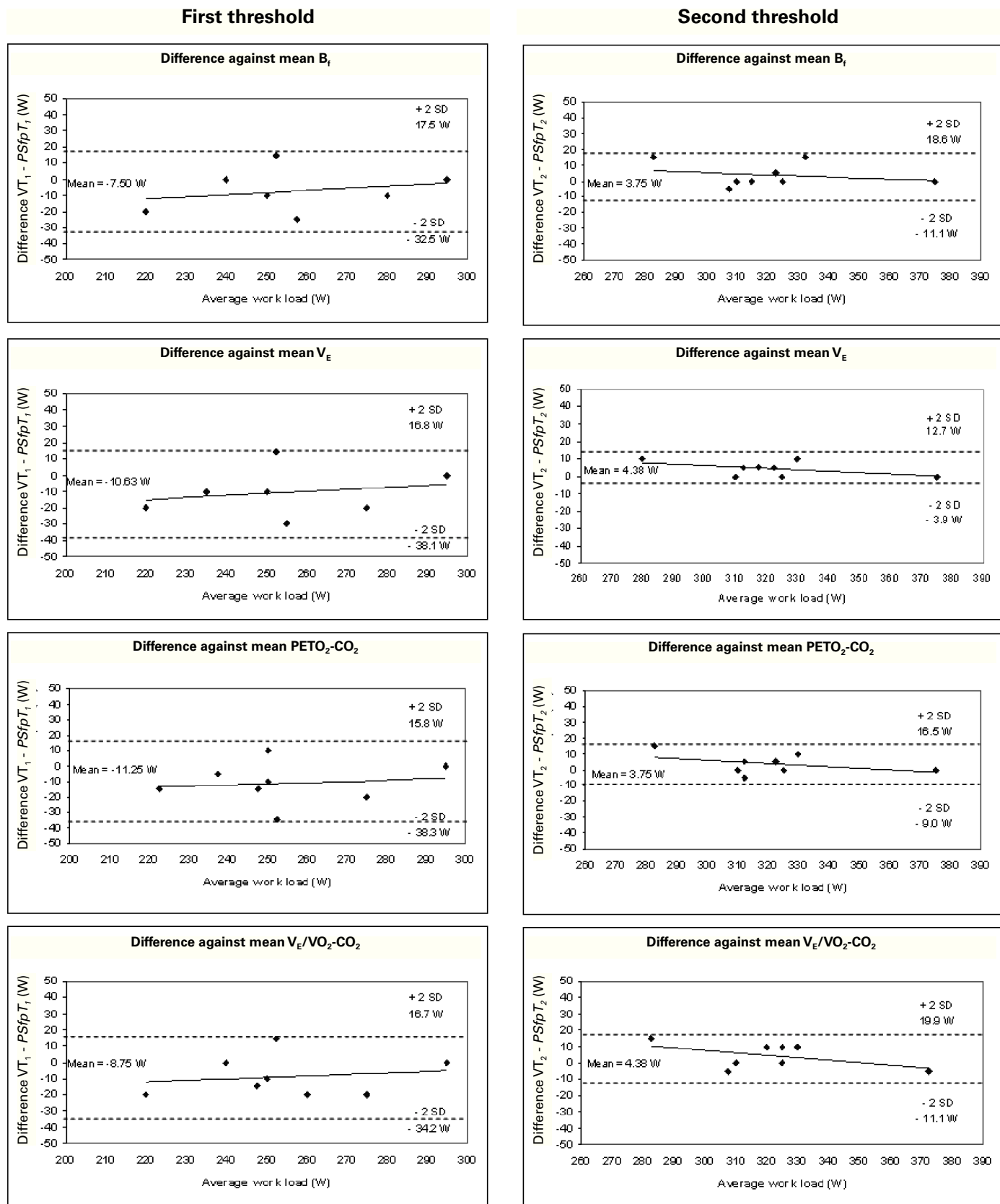


Fig. 4. Bland-Altman plots: differences between the mean threshold results determined by PS_{fp} and the ventilatory methods plotted against the average threshold work load (W). Left: aerobic threshold determined using PS_{fp} compared with that detected using B_t , V_E , $PETO_2-CO_2$ and V_E/VO_2-CO_2 (from above to below). Right: anaerobic threshold determined using PS_{fp} compared with that determined using B_t , V_E , $PETO_2-CO_2$ and V_E/VO_2-CO_2 (from above to below). Each graph shows the means of the differences and the upper and lower limits of agreement (mean difference \pm twice the standard deviation [SD]).

Tabla 3
t-test comparisons of the thresholds determined by WTC analysis of HRV (from PSf_p) and the ventilatory method (in seconds)

VT ₁	Mean ± SD	t-test	p	VT ₂	Mean ± SD	t-test	p
B _f	1,077 ± 59	-1.67	0.14	B _f	1,250 ± 63	1.43	0.2
PS _{f_p} T ₁	1,096 ± 55			PS _{f_p} T ₂	1,240 ± 67		
V _E	1,071 ± 60	-2.11	0.07	V _E	1,251 ± 61	2.43	0.05
PS _{f_p} T ₁	1,096 ± 55			PS _{f_p} T ₂	1,240 ± 67		
PET _{O₂} -CO ₂	1,070 ± 58	-2.20	0.06	PET _{O₂} -CO ₂	1,249 ± 61	-1.59	0.16
PS _{f_p} T ₁	1,096 ± 55			PS _{f_p} T ₂	1,240 ± 67		
V _E /VO ₂ -CO ₂	1,077 ± 57	-1.89	0.10	V _E /VO ₂ -CO ₂	1,251 ± 57	-1.55	0.16
PS _{f_p} T ₁	1,096 ± 55			PS _{f_p} T ₂	1,240 ± 67		

HRT: heart rate variability; SD: standard deviation; WTC: wavelet transform analysis.

using f_p . No significant differences were found between the results for VT₁ and f_pT_1 or VT₂ and f_pT_2 . Table 3 compares the threshold values (in seconds) obtained using the same gas exchange variables and those obtained using PSf_p . No significant differences were found between the results for VT₁ and PSf_pT_1 or VT₂ and PSf_pT_2 .

Figure 2 shows the behavior of f_p and PSf_p and several gas exchange variables against time during the incremental load test, as well as changes in the ventilatory parameters used for threshold determinations (B_f, V_E, PET_{O₂} and PET_{CO₂}, V_E/VO₂ and V_E/VCO₂). The points at which VT₁ and VT₂ were found are shown by arrows.

Figure 3 shows the Bland-Altman plots for the analysis of agreement between VT₁ and f_pT_1 , and VT₂ and f_pT_2 ; the mean differences were 5.9 and 10.2 W, respectively. The agreement for the first threshold was thus slightly better than for the second.

Figure 4 shows the same results for PSf_p ; the mean differences between VT₁ and PSf_pT_1 , and VT₂ and PSf_pT_2 , were 13.1 and 6.4 W respectively. The agreements for both thresholds were within acceptable limits, with that for the second threshold slightly better than for the first.

Discussion

The present results show that there are no significant differences between the aerobic and anaerobic thresholds identified using either gaseous exchange variables or the WTC of HRV. The behavior of the HF-VHF band, in terms of both its spectral power and peaks, when these are measured by means of WTA, is therefore a good tool for detecting the aerobic-anaerobic transition phase and its thresholds. In agreement with other authors^{17,19,29}, the validity of using the HRV as an inexpensive, non-invasive method for determining these thresholds is confirmed.

The results show the close coordination between breathing and heart rhythm (sinorespiratory arrhythmia). VT₂ correlates well with the anaerobic threshold determined by measuring the blood lactate concentration²⁶. However, several authors have questioned whether ventilatory thresholds reflect what happens at the blood or muscle level^{27,30,31}. What is beyond doubt, however, is the practical nature of non-invasive procedures, and the need for studies to demonstrate their validity^{17,19}.

With regards to the load, PSf_p behaves in a similar manner to that of the raw value of the spectral power measured by means of CWT in the HF-VHF band, although it accentuates the points of inflexion of this signal. In exercise-until-exhaustion tests, the spectral power decreases with the load until it reaches a minimum when the load is approximately 60% of its maximum value^{32,33}. After this point, the HF-VHF power spectrum shows moderate increments, marking the anaerobic threshold^{19,17,19}.

As B_f and V_E, f_p showed an increase with three inflexions points. It should be remembered that f_p is related to changes in baroreflex activity induced by mechanical respiratory effects^{29,34}.

No significant differences were found between the means of the thresholds determined by HRV analysis (involving the variables f_p and PSf_p) and VT₁ and VT₂ determined using B_f, V_E, PET_{O₂}-CO₂ or V_E/VO₂-VCO₂. The results display a high correlation between the two HRV methods proposed and the gas analysis methods. The differences between the two methods are not statistically significant at the $p < 0.05$ level.

According to our results, when comparing thresholds obtained from f_p to those from are compared with the ventilation-based methods, the agreement is closer for the first threshold (aerobic) than for the second (anaerobic). The method proposed here (f_p) tends to delay the second threshold (fig. 3). The SD of the differences in the first threshold was 5.9 W, while for the second threshold it rose to 10.27 W. The mean differences for the first threshold ranged from 0.63 to 1.88 W, while for the second threshold the range was 3.75 to 4.38 W.

However, when the results produced by the PSf_p method are compared to those of the ventilation-based methods, there is a closer agreement for the second than for the first threshold. In this case, the results indicate that the proposed method tends to delay the first threshold (fig. 4). The SD of the differences in the first threshold was 13.15 W, while for the second threshold it fell to 6.45 W. The mean differences for the first threshold ranged from 7.50 to 11.25 W, while for the second threshold the range was 3.75 to 4.38 W.

The present results show that the WT analysis of HRV and the standard gas exchange methodologies produced identical measurements of aerobic and anaerobic thresholds. When the comparison variable used in the wavelet analysis was f_p , close agreement was observed with the results of gas exchange variable analysis in terms of the aerobic threshold; the relationship was less strong for the anaerobic threshold. When the comparison variable was PSf_p , the relationship between the methodologies was again within the acceptable range, although this time it was stronger in terms of the anaerobic threshold.

In conclusion, the use of cardiometers seems to be a valid method for capturing the cardiac signal and its treatment by CWT; moreover, it is also inexpensive, non-aggressive and non-invasive for determining the aerobic-anaerobic transition phase.

References

- Svedahl K, MacIntosh BR. Anaerobic threshold: the concept and methods of measurement. Can J Appl Physiol. 2003;28:299-323.
- Gaskill SE, Ruby BC, Walker AJ, Sanchez OA, Serfass RC, Leon AS. Validity and reliability of combining three methods to determine ventilatory threshold. Med Sci Sports Exerc. 2001;33:1841-8.
- Hofmann P, Bunc V, Leitner H, Pokan R, Gaisl G. Heart rate threshold related to lactate turn point and steady state exercise on a cycle ergometer. Eur J Appl Physiol. 1994;69:132-9.
- Conconi F, Ferrari M, Ziglio PG, Droghetti P, Codeca L. Determination of the anaerobic threshold by a noninvasive field test in runners. J Appl Physiol. 1982;52:869-73.
- Droghetti P, Borsetto C, Casoni I, Cellini M, Ferrari M, Paolini AR, et al. Non-invasive determination of the anaerobic threshold in canoeing, cross-country skiing, cycling, roller, and iceskating, rowing, and walking. Eur J Appl Physiol. 1985;53:299-303.
- Ribeiro TF, Gomes VR, Moura MSA, Maraes VRFS, Catai AM, Travelin LC, et al. Estudo do limiar de anaerobiose em mulheres sedentárias durante esforço físico dinâmico. XIII Reunião Anual da FESBE; 1998; Caxambu-MG. Anais da XIII Reunião Anual da FESBE; 1998. v. 01. p. 258.
- Alonso DO, Forjaz CLM, Rezende LO, Braga AMFW, Barreto ACP, Negrão CE, et al. Comportamento da frequência cardíaca e da sua variabilidade du-

- rante as diferentes fases do exercício progressivo máximo. *Arq Bras Cardiol.* 1998;71:787-92.
8. Lima JRP, Kiss MAP. Limiar de variabilidade da frequência cardíaca. *Rev Bras Ativ Fis Saúde.* 1999;9:29-38.
 9. Anosov O, Patzak A, Kononovich Y, Persson PB. High-frequency oscillations of the heart rate during ramp load reflect the human anaerobic threshold. *Eur J Appl Physiol.* 2000;83:388-94.
 10. Sakabe DI, Ferreira V, Ribeiro TF, Azevedo GD, Milan LA, Catai AM, et al. Use of semiparametric model for the analysis of heart rate variability in order to determine the anaerobic threshold of middle aged men and menopausal women receiving or not hormonal replacement therapy. 13th Annual Meeting of the North American Menopause Society (NAMS). Actas: 94. Chicago, 2002.
 11. Marães VRFS, Teixeira LCA, Gallo L Jr, Catai AM, Oliveira L, Milan LA, et al. Determinação e validação do limiar de anaerobiose a partir de métodos de análise da frequência cardíaca e de sua variabilidade. *Rev Soc Cardiol Estado de São Paulo.* 2003;13 Suppl 4:1-16.
 12. Teixeira LCA. Análises do padrão do resposta da frequência cardíaca pelos métodos de series temporais e semiparamétrico e de sua variabilidade na determinação do limiar do anaerobiose. Tesis. Universidade de São Paulo, Brasil, 2003.
 13. Silva FMHSP, Silva AC, Murta LO, Lavrador MAS, Maraes VRFS, Moura MS, et al. Identification of anaerobic threshold during dynamic exercise in healthy men using Kolmogorov-Sinai Entropy. *Comp Cardiol.* 2005;32:731-4.
 14. Marães VRFS, Silva E, Catai AM, Novais LD, Moura MAS, Oliveira L, et al. Identification of anaerobic threshold using heart rate response during dynamic exercise. *Braz J Med Biol Res.* 2005;38(5):731-5.
 15. Brunetto AF, Moreira B, Tesini B, Müller D, Pinto D. Limiar ventilatório e variabilidade da frequência cardíaca em adolescentes. *Rev Bras Med Esporte.* 2005;11(1):22-7.
 16. Duarte L. Comparação entre diferentes metodologias para detecção do limiar anaerobiose durante exercício físico em cicloergômetro de homens saudáveis e com infarto do miocárdio. Tesis. Universidad Federal de São Carlos, Brasil, 2006.
 17. Cottin F, Lepretre PM, Lopes P, Papelier Y, Medigue C, Billat V. Assessment of ventilatory thresholds from heart rate variability in well-trained subjects during cycling. *Int J Sports Med.* 2006;27:959-67.
 18. Buchheit M, Solano R, Millet GP. Assessment of ventilatory thresholds from heart rate variability analysis during maximal field running exercise: is the method as accurate in young people as in adults? 4th Journées Internationales des Sciences du Sport. INSEPS. Paris (Francia), 2006.
 19. Cottin F, Medigue C, Lopes P, Lepretre PM, Heubert R, Billat V. Ventilatory thresholds assessment from heart rate variability during an incremental exhaustive running test. *Int J Sports Med.* 2007;28:287-94.
 20. Cottin F, Medigue C, Lepretre PM, Papelier Y, Koralsztein JP, Billat V. Heart rate variability during exercise performed below and above ventilatory threshold. *Med Sci Sports Exerc.* 2004;36:594-600.
 21. Grinker JA. Body composition and physical performance. Washington: D.C. National Academy Press; 1992.
 22. Kingsley M, Lewis MJ, Marson RE. Comparison of Polar 810s and an ambulatory ECG system for RR interval measurement during progressive exercise. *Int J Sports Med.* 2005;26:39-44.
 23. Percival DB, Walden A. Wavelets methods for time series analysis. Cambridge: Cambridge University Press; 2000.
 24. Teich MC, Heneghan C, Lowen SB, Turcott RG. Wavelets in Medicine and Biology. Boca Raton: CRC Pres; 1996.
 25. Wasserman K, Hansen JE, Sue D, Whipp YBJ, Casaburi R. Principles of exercise testing and interpretation. 2nd. ed. Philadelphia: Lea & Febiger; 1994.
 26. Aunola S, Rusko H. Aerobic and anaerobic thresholds determined from venous lactate or from ventilation and gas exchange in relation to muscle fiber composition. *Int J Sports Med.* 1986;7:161-6.
 27. Davis JA. Anaerobic threshold: review of the concept and directions for future research. *Med Sci Sports Exerc.* 1985;17(1):6-21.
 28. Bland JM, Altman DJ. Regression analysis. *Lancet.* 1986;19:908-9.
 29. Blain G, Meste O, Bouchard T, Bermon S. (2005). Assessment of ventilatory thresholds during graded and maximal exercise test using time varying analysis of respiratory sinus arrhythmia. *Br J Sports Med.* 2005;39(7):448-52; discussion 448-452.
 30. Brooks GA. Anaerobic threshold: review of the concept and directions for future research. *Med Sci Sports Exerc.* 1985;17:22-34.
 31. Simon J, Young JL, Gutin B, Blood DK, Case RB. Lactate accumulation relative to the anaerobic and respiratory compensation thresholds. *J Appl Physiol.* 1983;54:13-7.
 32. Macor F, Fagard R, Amery A. Power spectral analysis of RR interval and blood pressure short-term variability at rest and during dynamic exercise: comparison between cyclists and controls. *Int J Sports Med.* 1996;17:175-81.
 33. Tulppo MP, Makikallio TH, Takala TE, Seppanen T, Huikuri HV. Quantitative beat-to-beat analysis of heart rate dynamics during exercise. *Am J Physiol.* 1996;271:244-52.
 34. Cottin F, Papelier Y, Escourrou P. Effects of exercise load and breathing frequency on heart rate and blood pressure variability during dynamic exercise. *Int J Sports Med.* 1999;20:232-8.